

Network Comparison List

Effective October 1, 2019

LARGE GROUP 101+



Los Angeles County



For an up-to-date listing,
please visit www.healthnet.com >
ProviderSearch.

 Participating physician groups	Full	ExcelCare	SmartCare	Salud HMO y Más
Access IPA	✓	✓	✓	
Advantage Health Network	✓	✓	✓	
Alamitos IPA	✓	✓		
All Care Medical Group, Inc.	✓	✓	✓	✓
Allied Pacific Chinatown Service Center	✓	✓	✓	✓
Allied Pacific of California IPA	✓	✓	✓	✓
Allied Pacific of California IPA – East LA	✓	✓	✓	✓
Allied Physicians of California – CVIP	✓	✓	✓	✓
Alpha Care Medical Group	✓			✓
AltaMed Medical Group	✓	✓		✓
Angeles IPA, A Medical Corporation	✓	✓	✓	✓
Arroyo Seco Medical Group (A Division of Healthcare Partners)	✓	✓	✓	
Associated Hispanic Physicians of Southern California	✓	✓	✓	✓
Axminster Medical Group – Good Samaritan	✓	✓		
Axminster Medical Group – Olympia IPA	✓	✓		
Axminster Medical Group/Providence Medical Associates	✓	✓		
Bella Vista Medical Group IPA	✓	✓	✓	
Brookshire IPA	✓	✓		
Cedars-Sinai Health Associates	✓			
Cedars-Sinai Health Associates – Marina del Rey	✓			
Cedars-Sinai Med Care Fnd (Medical Group of Beverly Hills – Olympic)	✓			
Cedars-Sinai Med Care Fnd (Medical Group of Beverly Hills – Robertson)	✓			
Cedars-Sinai Medical Group – Marina del Rey	✓			
Centinela Valley IPA Medical Group, Inc.	✓	✓		
Citrus Valley Physician Group	✓	✓	✓	
Community Family Care – San Fernando Valley	✓	✓		✓
Community Family Care IPA – Antelope Valley	✓	✓		
Community Family Care IPA – Los Angeles	✓	✓		✓
Community Medical Group – Agoura	✓	✓	✓	
Community Medical Group – IPA Physicians	✓	✓	✓	
Community Medical Group – Simi Valley	✓	✓	✓	
Community Medical Group – Thousand Oaks	✓	✓	✓	
Community Medical Group – West Hills	✓	✓	✓	
Crown City Medical Group	✓	✓		✓
Eastland Medical Group	✓	✓	✓	

(continued)

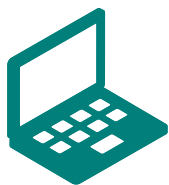
IMPORTANT! This listing is only a guide and is subject to change. As a rule, PPGs and PCPs affiliate with specific hospitals. **Please confirm that the PPG and or PCP is affiliated with the hospital listed before choosing a PCP.**

Network Comparison List

Effective October 1, 2019

LARGE GROUP 101+

Los Angeles County (continued)



For an up-to-date listing,
please visit www.healthnet.com >
ProviderSearch.

 Participating physician groups	Full	ExcelCare	SmartCare	Salud HMO y Más
Eastland Medical Group – Glendale	✓	✓	✓	
Eastland Medical Group – Glendora Division	✓	✓	✓	
Exceptional Care – Avalon Medical Group of Whittier, Inc.	✓	✓	✓	✓
Exceptional Care – Greater Los Angeles Healthcare	✓	✓	✓	✓
Exceptional Care – Greater San Gabriel Valley Physicians	✓	✓	✓	✓
Exceptional Care – Huntington Park Mission Medical Group	✓	✓	✓	✓
Exceptional Care – Mabuhay Medical Group	✓	✓	✓	
Exceptional Care – Pasadena Primary Care Physicians	✓	✓	✓	✓
Exceptional Care – Serendib Healthways, Inc.	✓	✓	✓	✓
Facey Med Fnd – Valencia Specialty & Women’s Health Ctr.	✓	✓		
Facey Medical Foundation – Burbank	✓	✓		
Facey Medical Foundation – Canyon Country	✓	✓		
Facey Medical Foundation – Copperhill	✓	✓		
Facey Medical Foundation – Mission Hills	✓	✓		
Facey Medical Foundation – Northridge	✓	✓		
Facey Medical Foundation – Porter Ranch	✓	✓		
Facey Medical Foundation – Tarzana	✓	✓		
Facey Medical Foundation – Tarzana II	✓	✓		
Facey Medical Foundation – Valencia	✓	✓		
Family Care Specialists – ELA1	✓	✓	✓	
Family Care Specialists – ELA2	✓	✓	✓	
Family Care Specialists – Highland Park	✓	✓	✓	
Family Care Specialists – Montebello	✓	✓	✓	
Family Choice Medical Group	✓	✓		
Family Health Alliance	✓	✓		✓
Global Care Medical Group, IPA	✓			✓
Good Samaritan Medical Practice Association	✓	✓	✓	✓
Greater Covina – Regal Medical Group	✓	✓	✓	
Greater San Gabriel Valley Physicians	✓	✓	✓	✓
Health Care LA, IPA	✓	✓		
HealthCare Partners – South Bay	✓	✓	✓	
HealthCare Partners – Valencia	✓	✓	✓	
HealthCare Partners IPA – Arcadia	✓	✓	✓	
HealthCare Partners IPA – East Los Angeles	✓	✓	✓	
HealthCare Partners IPA – East West	✓	✓	✓	
HealthCare Partners IPA – Glendale	✓	✓	✓	

(continued)

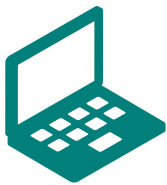
IMPORTANT! This listing is only a guide and is subject to change. As a rule, PPGs and PCPs affiliate with specific hospitals. **Please confirm that the PPG and or PCP is affiliated with the hospital listed before choosing a PCP.**

Network Comparison List


Effective October 1, 2019

LARGE GROUP 101+

Los Angeles County (continued)



For an up-to-date listing,
please visit www.healthnet.com >
ProviderSearch.

 Participating physician groups	Full	ExcelCare	SmartCare	Salud HMO y Más
HealthCare Partners IPA – Little Company of Mary	✓	✓	✓	
HealthCare Partners IPA – Long Beach	✓	✓	✓	
HealthCare Partners IPA – Los Angeles County	✓	✓	✓	
HealthCare Partners IPA – Montebello	✓	✓	✓	
HealthCare Partners IPA – Northridge Medical Group	✓	✓	✓	
HealthCare Partners IPA – Pasadena	✓	✓	✓	
HealthCare Partners IPA – San Fernando Valley	✓	✓	✓	
HealthCare Partners IPA – South Bay	✓	✓	✓	
HealthCare Partners IPA – South Coast	✓	✓	✓	
HealthCare Partners IPA – Westside	✓	✓	✓	
HealthCare Partners Medical Group	✓	✓	✓	
HealthCare Partners Medical Group – Airport Plaza	✓	✓	✓	
HealthCare Partners Medical Group – Alhambra	✓	✓	✓	
HealthCare Partners Medical Group – Arcadia	✓	✓	✓	
HealthCare Partners Medical Group – Compton	✓	✓	✓	
HealthCare Partners Medical Group – Downey	✓	✓	✓	
HealthCare Partners Medical Group – East Los Angeles	✓	✓	✓	
HealthCare Partners Medical Group – El Monte	✓	✓	✓	
HealthCare Partners Medical Group – Glen Oaks	✓	✓	✓	
HealthCare Partners Medical Group – Glendale	✓	✓	✓	
HealthCare Partners Medical Group – Glendora	✓	✓	✓	
HealthCare Partners Medical Group – Huntington Park	✓	✓	✓	
HealthCare Partners Medical Group – LB Alamos Ave.	✓	✓	✓	
HealthCare Partners Medical Group – Long Beach	✓	✓	✓	
HealthCare Partners Medical Group – Los Angeles	✓	✓	✓	
HealthCare Partners Medical Group/Magan – Covina	✓	✓	✓	
HealthCare Partners Medical Group – Mission Hills	✓	✓	✓	
HealthCare Partners Medical Group – Monrovia	✓	✓	✓	
HealthCare Partners Medical Group – Montebello	✓	✓	✓	
HealthCare Partners Medical Group – Monterey Park	✓	✓	✓	
HealthCare Partners Medical Group – Pasadena Main	✓	✓	✓	
HealthCare Partners Medical Group – San Gabriel	✓	✓	✓	
HealthCare Partners Medical Group – Temple City	✓	✓	✓	
HealthCare Partners Medical Group – Van Nuys	✓	✓	✓	
HealthCare Partners Medical Group – West Hills	✓	✓	✓	
Heritage Health Care	✓	✓	✓	
Heritage Provider Network	✓	✓	✓	
Heritage Sierra Medical Group	✓	✓	✓	

(continued)

IMPORTANT! This listing is only a guide and is subject to change. As a rule, PPGs and PCPs affiliate with specific hospitals. **Please confirm that the PPG and or PCP is affiliated with the hospital listed before choosing a PCP.**

Network Comparison List


Effective October 1, 2019

LARGE GROUP 101+

Los Angeles County (continued)



For an up-to-date listing,
please visit www.healthnet.com >
ProviderSearch.

 Participating physician groups	Full	ExcelCare	SmartCare	Salud HMO y Más
High Desert Medical Group	✓	✓	✓	
Korean American Medical Group	✓	✓	✓	
Lakeside Medical Group – Burbank/North Hollywood	✓	✓	✓	
Lakeside Medical Group – Central Valley	✓	✓	✓	
Lakeside Medical Group – Glendale	✓	✓	✓	
Lakeside Medical Group – North Valley	✓	✓	✓	
Lakeside Medical Group – Santa Clarita	✓	✓	✓	
Lakeside Medical Group – Verdugo	✓	✓	✓	
Lakewood IPA	✓	✓		
Los Angeles Medical Center IPA	✓	✓	✓	✓
Martin Luther King Jr. Community Medical Group – Compton	✓	✓		
MemorialCare Medical Group – LB/Bellflower	✓	✓		
MemorialCare Medical Group – Spring	✓	✓		
MemorialCare Medical Group – Torrance	✓	✓		
Mid Cities, IPA	✓	✓	✓	
Monarch Healthcare, an MG, Inc.	✓	✓		
Omnicare Medical Group	✓	✓	✓	
Phys Assoc Greater San Gabriel Valley (Beverly/Div HCP)	✓	✓	✓	
Phys Assoc Greater San Gabriel Valley (Citrus/Div HCP)	✓	✓	✓	
Phys Assoc Greater San Gabriel Valley (Glendale/Verdugo/Div HCP)	✓	✓	✓	
Phys Assoc Greater San Gabriel Valley (Pasadena/Arcadia/Div HCP)	✓	✓	✓	
Phys Assoc Greater San Gabriel Valley (San Gabriel/Div HCP)	✓	✓	✓	
PIH Health Physicians – Affiliated Providers	✓			
PIH Health Physicians – Medical Group	✓			
Pioneer Provider Network, A Medical Group, Inc.	✓	✓	✓	
Premier Physician Network	✓	✓		
Premier Physician Network – Valley Division	✓	✓		
Prospect Medical Group Los Angeles	✓	✓	✓	
Providence Care Network	✓	✓		
Prudent Medical Group	✓	✓	✓	
Regal Medical Group – Glendale Physicians Alliance	✓	✓	✓	
Regal Medical Group of South Los Angeles	✓	✓	✓	
Regal Medical Group of the San Fernando Valley	✓	✓	✓	
Saint John’s Physician Partners	✓	✓		

(continued)

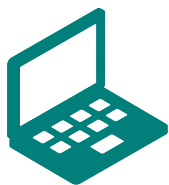
IMPORTANT! This listing is only a guide and is subject to change. As a rule, PPGs and PCPs affiliate with specific hospitals. **Please confirm that the PPG and or PCP is affiliated with the hospital listed before choosing a PCP.**

Effective October 1, 2019

LARGE GROUP 101+

Los Angeles County (continued)

Participating physician groups	Full	ExcelCare	SmartCare	Salud HMO y Más
San Gabriel Valley Regal Medical Group	✓	✓	✓	
Seoul Medical Group, IPA	✓	✓	✓	
Serra Community Medical Clinic	✓	✓	✓	✓
St. Mary IPA	✓	✓		
St. Vincent IPA Medical Group	✓	✓	✓	
Torrance Health IPA	✓	✓	✓	
Torrance Memorial Physician Network	✓			
UCLA – Primary Care Network	✓			
UCLA Medical Group	✓			
UCLA Medical Group – Northwest	✓			
UCLA Medical Group – Santa Monica	✓			
UCLA Medical Group – Santa Monica Bay Physicians	✓			
UCLA Medical Group – South Bay	✓			
West Covina Medical Clinic, Inc.	✓	✓	✓	



For an up-to-date listing,
please visit www.healthnet.com >
ProviderSearch.

Participating hospitals	Full	ExcelCare	SmartCare	Salud HMO y Más
Alhambra Hospital Medical Center	✓	✓	✓	✓
Antelope Valley Hospital	✓	✓	✓	
Beverly Hospital	✓	✓	✓	✓
California Hospital Medical Center	✓	✓	✓	✓
Cedars-Sinai Medical Center	✓			
Centinela Hospital Medical Center	✓	✓	✓	
Children’s Hospital of Los Angeles	✓	✓		
Coast Plaza Hospital	✓	✓	✓	
East Los Angeles Doctors Hospital	✓	✓	✓	✓
Emanate Health Foothill Presbyterian Hospital	✓	✓	✓	
Emanate Health Medical Center	✓	✓	✓	
Emanate Health Queen of the Valley Hospital	✓	✓	✓	
Garfield Medical Center	✓	✓	✓	✓
Glendale Adventist Medical Center	✓	✓	✓	
Glendale Memorial Hospital and Health Center	✓	✓	✓	
Good Samaritan Hospital	✓	✓	✓	
Greater El Monte Community Hospital	✓	✓	✓	✓
Henry Mayo Newhall Memorial Hospital	✓	✓	✓	
Hollywood Presbyterian Medical Center	✓	✓	✓	✓
Huntington Memorial Hospital	✓	✓	✓	
Lakewood Regional Medical Center	✓	✓	✓	✓

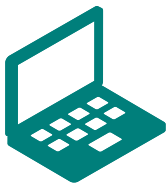
(continued)

IMPORTANT! This listing is only a guide and is subject to change. As a rule, PPGs and PCPs affiliate with specific hospitals. **Please confirm that the PPG and or PCP is affiliated with the hospital listed before choosing a PCP.**

Effective October 1, 2019

LARGE GROUP 101+

Los Angeles County (continued)



For an up-to-date listing,
please visit www.healthnet.com >
ProviderSearch.

 Participating hospitals	Full	ExcelCare	SmartCare	Salud HMO y Más
Little Company of Mary Hospital	✓	✓	✓	
Little Company of Mary Medical Center San Pedro	✓	✓		
Long Beach Memorial Medical Center	✓	✓	✓	
Los Angeles Community Hospital	✓	✓		
Marina Del Rey Hospital	✓			
Martin Luther King Jr. Community Hospital	✓	✓		
Memorial Hospital of Gardena	✓	✓	✓	✓
Methodist Hospital of Southern California	✓	✓	✓	
Miller Children's Hospital	✓	✓		
Monterey Park Hospital	✓	✓	✓	✓
Northridge Hospital Medical Center, Roscoe Boulevard Campus	✓	✓	✓	
Norwalk Community	✓	✓		
Olympia Medical Center	✓	✓		
Pacifica Hospital of the Valley	✓	✓	✓	✓
Palmdale Regional Medical Center	✓	✓	✓	
PIH Health Hospital - Downey	✓			
PIH Health Hospital - Whittier	✓			
Pomona Valley Hospital Medical Center	✓	✓	✓	
Providence Holy Cross Medical Center	✓	✓	✓	
Providence Saint John's Health Center	✓			
Providence Saint Joseph Medical Center	✓	✓	✓	
Providence Tarzana Medical Center	✓	✓	✓	
Ronald Reagan UCLA Medical Center	✓			
San Dimas Community Hospital	✓	✓	✓	
San Gabriel Valley Medical Center	✓	✓	✓	✓
Santa Monica UCLA Medical Center and Orthopaedic Hospital	✓			
Southern California Hospital at Culver City	✓	✓	✓	
Southern California Hospital at Hollywood	✓	✓	✓	
Southern California Hospital at Van Nuys	✓	✓	✓	
St. Francis Medical Center	✓	✓	✓	
St. Mary Medical Center	✓	✓	✓	
St. Vincent Medical Center	✓	✓	✓	
Torrance Memorial Medical Center	✓	✓	✓	
USC Verdugo Hills Hospital LLC	✓	✓	✓	
Valley Presbyterian Hospital	✓	✓	✓	✓
West Covina Medical Center	✓	✓	✓	
West Hills Hospital & Medical Center	✓	✓	✓	
White Memorial Medical Center	✓	✓	✓	
Whittier Hospital Medical Center	✓	✓	✓	✓

IMPORTANT! This listing is only a guide and is subject to change. As a rule, PPGs and PCPs affiliate with specific hospitals. **Please confirm that the PPG and or PCP is affiliated with the hospital listed before choosing a PCP.**

Definition of Terms



Participating Physician Group (PPG)

A group of doctors, set up as a legal entity, that has an agreement with Health Net to provide medical care to Health Net

members. PPGs are sometimes referred to as a “contracting physician group” or a “medical group.” An individual practice association may also be a PPG.



Primary Care Physician (PCP)

A doctor who manages and directs the delivery of covered health care services and supplies to the member. PCPs include general and family practitioners, internists, pediatricians, obstetricians and gynecologists.



Participating Hospitals

A member’s PCP may need to refer them to a hospital for further care.

The PCP will refer the member to a hospital where the PCP has admitting privileges. Log in to www.healthnet.com/ProviderSearch for a list of hospitals where the PCP has admitting privileges.

Note: Members must first contact their PCP for medical care and advice before they receive treatment through a hospital. The PCP must authorize hospital admission and treatment.

In an emergency, the member should call 911 or go to the nearest ER.

Full HMO Network

Available in all or parts of Alameda, Contra Costa, El Dorado, Fresno, Kern, Kings, Los Angeles, Madera, Marin, Merced, Napa, Nevada, Orange, Placer, Riverside, Sacramento, San Bernardino, San Diego, San Francisco, San Joaquin, San Mateo, Santa Barbara, Santa Clara, Santa Cruz, Solano, Sonoma, Stanislaus, Tulare, Ventura, and Yolo counties.

SmartCare HMO Network

Available in all or parts of Alameda, Contra Costa, Fresno, Kern, Kings, Los Angeles, Marin, Napa, Orange, Placer, Riverside, Sacramento, San Bernardino, San Diego, San Francisco, San Joaquin, San Mateo, Santa Clara, Santa Cruz, Solano, Sonoma, Tulare, and Yolo counties.

ExcelCare HMO Network

Available in all or parts of Kern, Los Angeles, Orange, Riverside, San Bernardino, San Diego, San Francisco, Santa Clara, Stanislaus, and Ventura counties.

Salud HMO y Más Network

Available in Orange County and select ZIP codes of Kern, Los Angeles, Riverside, San Bernardino, and San Diego counties.

IMPORTANT! This listing is only a guide and is subject to change. As a rule, PPGs and PCPs affiliate with specific hospitals. **Please confirm that the PPG and or PCP is affiliated with the hospital listed before choosing a PCP.**

For more information, please contact:

CUSTOMER CONTACT CENTER

1-800-522-0088

HealthNet.com