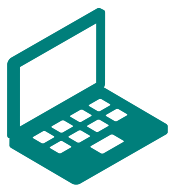


Effective October 1, 2019

LARGE GROUP 101+



## Orange County



For an up-to-date listing,  
please visit [www.healthnet.com](http://www.healthnet.com) >  
**ProviderSearch.**

Participating physician groups	Full	ExcelCare	SmartCare	Salud HMO y Más
Affiliated Doctors of Orange County	✓	✓	✓	
Alamitos IPA	✓	✓		
Allied Physicians of California (Greater Orange County Medical Grp)	✓	✓	✓	
AltaMed Health Services IPA – Orange	✓	✓		✓
AMVI Medical Group, Inc.	✓	✓		
Angeles IPA, A Medical Corporation	✓	✓	✓	✓
AppleCare Medical Group – Downey Region	✓	✓	✓	✓
AppleCare Medical Group – Select Orange County Region	✓	✓		✓
AppleCare Medical Group – Select Region	✓	✓		✓
AppleCare Medical Group – St. Francis Region	✓	✓	✓	
AppleCare Medical Group – Whittier Region	✓	✓		✓
Brookshire IPA	✓	✓		
Daehan Prospect Medical Group	✓	✓	✓	
Edinger Medical Group	✓			
Fountain Valley IPA	✓	✓		
Greater Newport Physicians	✓			
Greater Newport Physicians – HOAG	✓			
Greater Newport Physicians – Long Beach	✓			
Greater Newport Physicians – Orange Coast	✓			
Greater Newport Physicians – Saddleback	✓			
HealthCare Partners IPA – Arta Health Network	✓	✓	✓	✓
HealthCare Partners Medical Group – Anaheim	✓	✓	✓	
HealthCare Partners Medical Group – Harbor	✓	✓	✓	
HealthCare Partners Medical Group – Huntington Beach	✓	✓	✓	
HealthCare Partners Medical Group – Santa Ana	✓	✓	✓	
HealthCare Partners Medical Group – Tustin	✓	✓	✓	
Hoag Affiliated Physicians/SJHH	✓			
Lakewood IPA	✓	✓		
MemorialCare Medical Group – Anaheim	✓	✓		
MemorialCare Medical Group – Costa Mesa	✓	✓		
MemorialCare Medical Group – Dana Point	✓	✓		
MemorialCare Medical Group – Fountain Valley	✓	✓		
MemorialCare Medical Group – Huntington Beach	✓	✓		
MemorialCare Medical Group – Irvine	✓	✓		
MemorialCare Medical Group – Laguna Hills	✓	✓		
MemorialCare Medical Group – Mission Viejo (Madero Road)	✓	✓		
MemorialCare Medical Group – Oceanview	✓	✓		
MemorialCare Medical Group – Rancho Santa Margarita	✓	✓		
MemorialCare Medical Group – San Clemente #250	✓	✓		
MemorialCare Medical Group – San Juan Capistrano	✓	✓		

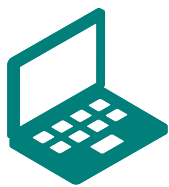
(continued)

**IMPORTANT!** This listing is only a guide and is subject to change. As a rule, PPGs and PCPs affiliate with specific hospitals. **Please confirm that the PPG and or PCP is affiliated with the hospital listed before choosing a PCP.**


Effective October 1, 2019

LARGE GROUP 101+

## Orange County (continued)



For an up-to-date listing,  
please visit [www.healthnet.com](http://www.healthnet.com) >  
**ProviderSearch.**

 Participating physician groups	Full	ExcelCare	SmartCare	Salud HMO y Más
MemorialCare Medical Group – Santa Ana, 17th Street	✓	✓		
MemorialCare Medical Group - Tustin	✓	✓		
Mission Heritage Medical Group	✓			
Mission Hospital Affiliated Physicians	✓			
Monarch Healthcare, A Medical Group, Inc.	✓	✓		
Nuestra Familia Medical Group	✓	✓	✓	
Prospect Gateway Medical Group	✓	✓	✓	
Prospect Genesis Health Care	✓	✓	✓	
Prospect Health Source Medical Group	✓	✓	✓	
Prospect Latino Medical Group	✓	✓	✓	
Prospect Medical Group	✓	✓	✓	
Prospect NWOC Medical Group	✓	✓	✓	
Prospect Professional Care Medical Group, Inc.	✓	✓	✓	
Regal Medical Group of Orange County	✓	✓	✓	
St. Joseph Heritage Medical Group	✓			
St. Joseph Hospital Affiliated Physicians	✓			
St. Jude Affiliated Physicians	✓			
St. Jude Heritage Medical Group	✓			
St. Mary IPA	✓	✓		
UCI University Physicians and Surgeons	✓			
UCI University Physicians & Surgeons - UPS2	✓	✓		

Participating hospitals	Full	ExcelCare	SmartCare	Salud HMO y Más
AHMC Anaheim Regional Medical Center LP	✓	✓	✓	
Anaheim Global Medical Center	✓	✓	✓	✓
Chapman Global Medical Center	✓	✓	✓	
Foothill Regional Medical Center	✓			
Fountain Valley Regional Hospital and Medical Center	✓	✓	✓	
Garden Grove Hospital Medical Center	✓	✓	✓	
Hoag Memorial Hospital Presbyterian – Irvine	✓	✓		
Hoag Memorial Hospital Presbyterian – Newport Beach	✓	✓		
Los Alamitos Medical Center	✓	✓	✓	
Mission Hospital – Laguna Beach Campus	✓			
Mission Hospital Regional Medical Center	✓	✓		
Orange Coast Memorial Medical Center	✓	✓	✓	
Orange County Global Medical Center	✓	✓	✓	✓
Placentia Linda Hospital	✓	✓	✓	
Saddleback Memorial Medical Center	✓	✓	✓	
South Coast Global Medical Center	✓	✓	✓	✓
St. Joseph Hospital of Orange	✓			
St. Jude Medical Center	✓			
UC Irvine Medical Center	✓			

**IMPORTANT!** This listing is only a guide and is subject to change. As a rule, PPGs and PCPs affiliate with specific hospitals. **Please confirm that the PPG and or PCP is affiliated with the hospital listed before choosing a PCP.**

## Definition of Terms



### Participating Physician Group (PPG)

A group of doctors, set up as a legal entity, that has an agreement with Health Net to provide medical care to Health Net members. PPGs are sometimes referred to as a “contracting physician group” or a “medical group.” An individual practice association may also be a PPG.



### Primary Care Physician (PCP)

A doctor who manages and directs the delivery of covered health care services and supplies to the member. PCPs include general and family practitioners, internists, pediatricians, obstetricians and gynecologists.



### Participating Hospitals

A member’s PCP may need to refer them to a hospital for further care.

The PCP will refer the member to a hospital where the PCP has admitting privileges. Log in to [www.healthnet.com/ProviderSearch](http://www.healthnet.com/ProviderSearch) for a list of hospitals where the PCP has admitting privileges.

**Note:** Members must first contact their PCP for medical care and advice before they receive treatment through a hospital. The PCP must authorize hospital admission and treatment.

***In an emergency, the member should call 911 or go to the nearest ER.***

### Full HMO Network

Available in all or parts of Alameda, Contra Costa, El Dorado, Fresno, Kern, Kings, Los Angeles, Madera, Marin, Merced, Napa, Nevada, Orange, Placer, Riverside, Sacramento, San Bernardino, San Diego, San Francisco, San Joaquin, San Mateo, Santa Barbara, Santa Clara, Santa Cruz, Solano, Sonoma, Stanislaus, Tulare, Ventura, and Yolo counties.

### SmartCare HMO Network

Available in all or parts of Alameda, Contra Costa, Fresno, Kern, Kings, Los Angeles, Marin, Napa, Orange, Placer, Riverside, Sacramento, San Bernardino, San Diego, San Francisco, San Joaquin, San Mateo, Santa Clara, Santa Cruz, Solano, Sonoma, Tulare, and Yolo counties.

### ExcelCare HMO Network

Available in all or parts of Kern, Los Angeles, Orange, Riverside, San Bernardino, San Diego, San Francisco, Santa Clara, Stanislaus, and Ventura counties.

### Salud HMO y Más Network

Available in Orange County and select ZIP codes of Kern, Los Angeles, Riverside, San Bernardino, and San Diego counties.

**IMPORTANT!** This listing is only a guide and is subject to change. As a rule, PPGs and PCPs affiliate with specific hospitals. **Please confirm that the PPG and or PCP is affiliated with the hospital listed before choosing a PCP.**

**For more information, please contact:**

### CUSTOMER CONTACT CENTER

1-800-522-0088

[HealthNet.com](http://HealthNet.com)