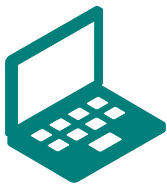


Effective October 1, 2019

LARGE GROUP 101+



## Riverside County



For an up-to-date listing,  
please visit [www.healthnet.com](http://www.healthnet.com) >  
**ProviderSearch.**

Participating physician groups	Full	ExcelCare	SmartCare	Salud HMO y Más
Alpha Care Medical Group – Riverside	✓			✓
Beaver Medical Group – Banning	✓	✓	✓	
Cal Care IPA, Inc.	✓	✓		
Desert Oasis Healthcare	✓	✓	✓	
Empire Physicians Medical Group	✓	✓	✓	
Hemet Community Medical Group	✓	✓		
Hemet Community Medical Group – Menifee Valley	✓	✓		
Hemet Community Medical Group – Temecula Valley	✓	✓		
LaSalle Medical Associates – Riverside	✓	✓	✓	✓
PrimeCare Medical Group of Corona, Inc.	✓	✓	✓	
PrimeCare Medical Group of Hemet Valley, Inc.	✓	✓	✓	
PrimeCare Medical Group of Riverside, Inc.	✓	✓	✓	
PrimeCare Medical Group of Sun City, Inc.	✓	✓	✓	
PrimeCare Medical Group of Temecula, Inc.	✓	✓	✓	
Regal Medical Group of Riverside County	✓	✓	✓	
Riverside Medical Clinic	✓	✓		
Riverside Medical Clinic – Canyon Springs	✓	✓		
Riverside Medical Clinic – Parkview	✓	✓		
Riverside Physician Network	✓			
Sharp Graybill Temecula	✓	✓		
Tri-Valley Medical Group	✓	✓	✓	
Vantage Medical Group (MMG)	✓	✓		
Vantage Medical Group – RI	✓	✓		

Participating hospitals	Full	ExcelCare	SmartCare	Salud HMO y Más
Corona Regional Medical Center	✓	✓	✓	
Desert Regional Medical Center	✓	✓	✓	
Eisenhower Medical Center	✓	✓	✓	
Hemet Valley Medical Center	✓	✓	✓	
John F. Kennedy Memorial Hospital	✓	✓	✓	
Menifee Valley Medical Center	✓	✓		
Parkview Community Hospital Medical Center	✓	✓	✓	✓
Riverside Community Hospital	✓	✓	✓	
San Geronio Memorial Hospital	✓	✓	✓	
Southwest Healthcare System – Inland Valley Medical Center	✓	✓	✓	
Southwest Healthcare System – Rancho Springs Medical Center	✓	✓	✓	
Temecula Valley Hospital	✓	✓	✓	

**IMPORTANT!** This listing is only a guide and is subject to change. As a rule, PPGs and PCPs affiliate with specific hospitals. **Please confirm that the PPG and or PCP is affiliated with the hospital listed before choosing a PCP.**

## Definition of Terms



### Participating Physician Group (PPG)

A group of doctors, set up as a legal entity, that has an agreement with Health Net to provide medical care to Health Net members. PPGs are sometimes referred to as a “contracting physician group” or a “medical group.” An individual practice association may also be a PPG.



### Primary Care Physician (PCP)

A doctor who manages and directs the delivery of covered health care services and supplies to the member. PCPs include general and family practitioners, internists, pediatricians, obstetricians and gynecologists.



### Participating Hospitals

A member’s PCP may need to refer them to a hospital for further care.

The PCP will refer the member to a hospital where the PCP has admitting privileges. Log in to [www.healthnet.com/ProviderSearch](http://www.healthnet.com/ProviderSearch) for a list of hospitals where the PCP has admitting privileges.

**Note:** Members must first contact their PCP for medical care and advice before they receive treatment through a hospital. The PCP must authorize hospital admission and treatment.

***In an emergency, the member should call 911 or go to the nearest ER.***

#### Full HMO Network

Available in all or parts of Alameda, Contra Costa, El Dorado, Fresno, Kern, Kings, Los Angeles, Madera, Marin, Merced, Napa, Nevada, Orange, Placer, Riverside, Sacramento, San Bernardino, San Diego, San Francisco, San Joaquin, San Mateo, Santa Barbara, Santa Clara, Santa Cruz, Solano, Sonoma, Stanislaus, Tulare, Ventura, and Yolo counties.

#### SmartCare HMO Network

Available in all or parts of Alameda, Contra Costa, Fresno, Kern, Kings, Los Angeles, Marin, Napa, Orange, Placer, Riverside, Sacramento, San Bernardino, San Diego, San Francisco, San Joaquin, San Mateo, Santa Clara, Santa Cruz, Solano, Sonoma, Tulare, and Yolo counties.

#### ExcelCare HMO Network

Available in all or parts of Kern, Los Angeles, Orange, Riverside, San Bernardino, San Diego, San Francisco, Santa Clara, Stanislaus, and Ventura counties.

#### Salud HMO y Más Network

Available in Orange County and select ZIP codes of Kern, Los Angeles, Riverside, San Bernardino, and San Diego counties.

**IMPORTANT!** This listing is only a guide and is subject to change. As a rule, PPGs and PCPs affiliate with specific hospitals. **Please confirm that the PPG and or PCP is affiliated with the hospital listed before choosing a PCP.**

**For more information, please contact:**

#### CUSTOMER CONTACT CENTER

1-800-522-0088

[HealthNet.com](http://HealthNet.com)